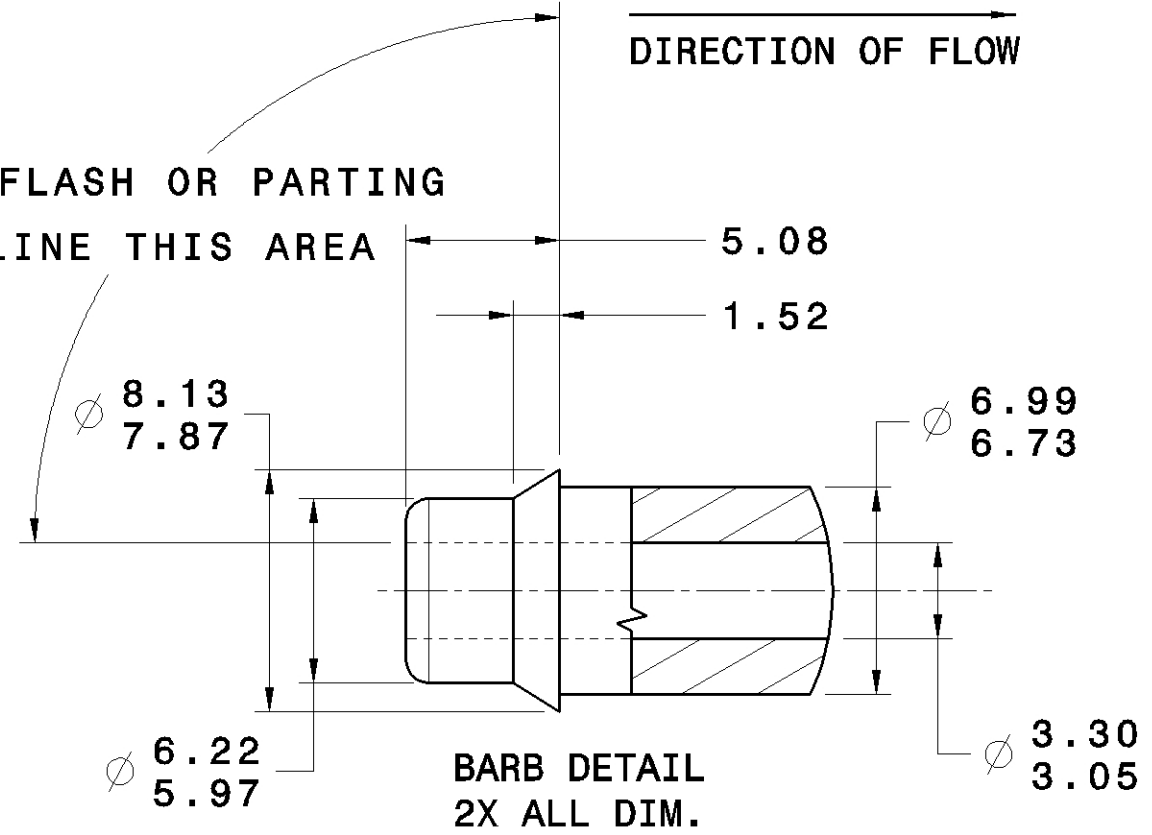


NO FLASH OR PARTING  
LINE THIS AREA



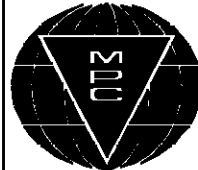
- NOTE:
- C1 DRY LEAK TEST (SPRINT TESTER). LEAK TEST LESS THAN 3CC @ 5PSI. 100% FLOW TEST REQUIRED. MINIMUM OF 1.55 CFM @ 10"HG.
  - B1 FORWARD FLOW WITH 10 IN. HG VACUUM APPLIED TO OUTLET TO BE 1.55 CFM MINIMUM.
  - D1 LAZER DATE CODE REQUIRED.

THE DATA, DRAWINGS, AND INFORMATION CONTAINED ON THIS DOCUMENT IS CONFIDENTIAL AND THE SOLE PROPERTY OF MPC INC. AND MAY NOT BE REPRODUCED, USED OR DISCLOSED WITHOUT PRIOR WRITTEN PERMISSION OF AN OFFICER OF MPC INC.	
WEIGHT(kg)	METRIC LINEAR DIMENSIONS ARE MM UNLESS NOTED
VOLUME (MM³)	

THIS DRAWING CONFORMS TO ASME Y14.5-1994	
	THIRD ANGLE PROJECTION
UNLESS OTHERWISE SPECIFIED	
ALL LINEAR DIM. ± 1	
ALL ANGULAR DIM. ±	
ALL FILLET RADII	
ALL CORNER RADII	
MAX DRAFT	
MAX COMBINED PARTING LINE FLASH AND MISMATCH TO BE	
SURFACE FINISH EXTERIOR INTERIOR	

D1	1.55 WAS 1.3	080417	GHK WLLKA	JOEST	KATOI
C1	REMOVED WATER TESTING NOTE	080220	MTKHA KVH	JOEST	KATOI
B1	REVISED NOTE PER ECR #9735	4/07/2006	MTKHA KVH	EMM	
	REDRAWN IN CATIA V5				
A	REVISED MAT'L. SPEC. PER ECR #4539	920114	GHK JMR		
REV	DESCRIPTION	DATE	DRAWN CHECKED	ENG. APPROVAL	AQP

WAS: LAYOUT NUMBER:

**MPC**

**DO NOT SCALE** NUMBER OF DECIMAL PLACES DOES NOT IMPLY A TOLERANCE

DRAWN BY <b>GHK</b>	CHECKED BY <b>JMR</b>	DESIGNED BY	SCALE <b>2:1</b>
DATE <b>920102</b>	DATE <b>920102</b>	DATE	DRAWING SIZE <b>B</b>
PRD ENGINEER	MFG ENGINEER	QC	TOOL ENGINEER
DATE	DATE	DATE	DATE
CUSTOMER NUMBER		DATE	REV
MATERIAL <b>BASE AND COVER: ZYTEL</b>			
<b>DIAPHRAGM: BLACK EPDM P/N CS4124</b>			
DRAWING TITLE <b>1/4 IN. CHECK VALVE ASSEMBLY</b>		MODEL REV. <b>A</b>	DRAWING REV <b>D</b>
		SHEET <b>1/1</b>	
		DRAWING NUMBER <b>A594</b>	