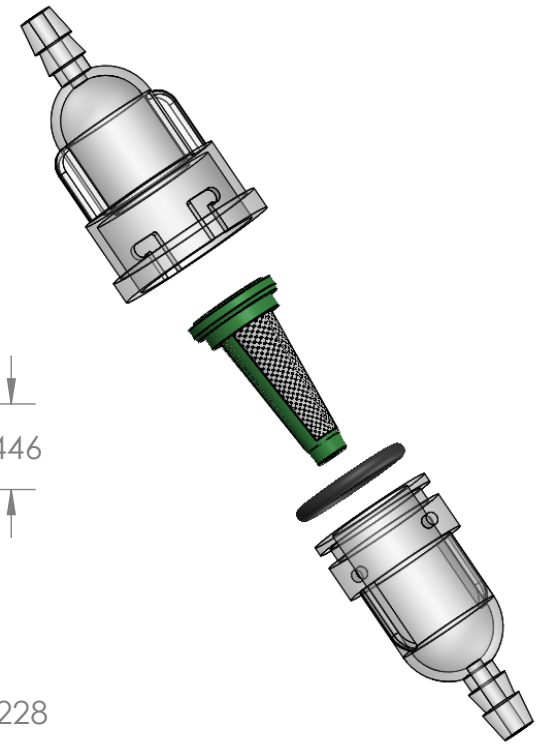
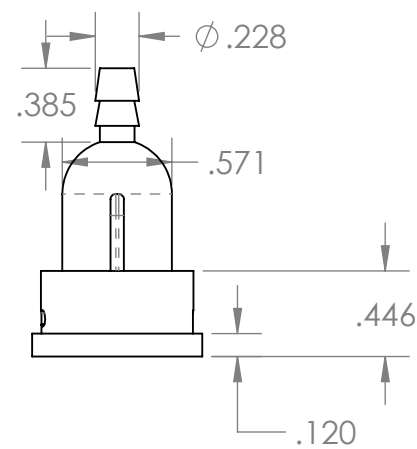
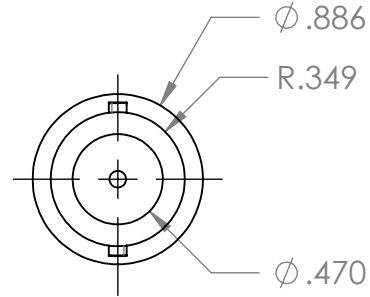
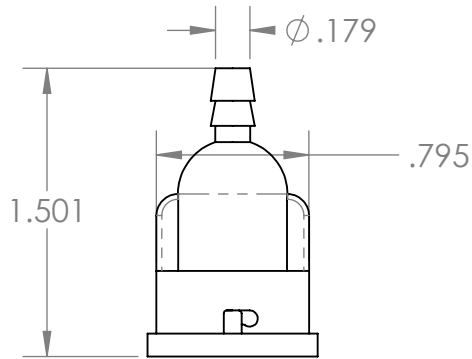
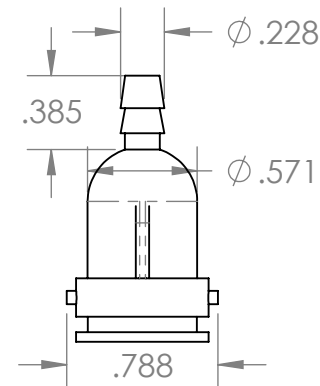
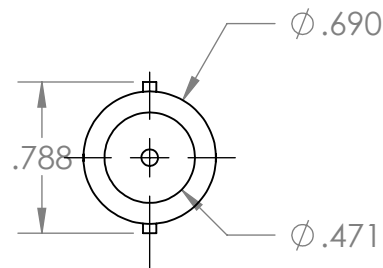
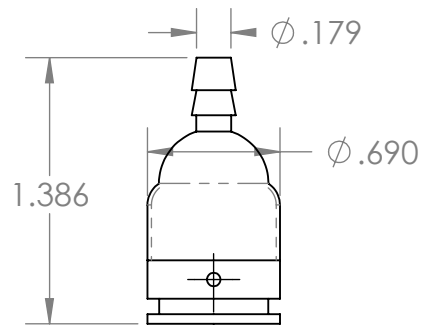


## Housing Top



## Housing Bottom



PROPRIETARY AND CONFIDENTIAL

THE INFORMATION CONTAINED IN THIS DRAWING IS THE SOLE PROPERTY OF INDUSTRIAL SPECIALTIES MFG. AND IS MED SPECIALITES. ANY REPRODUCTION IN PART OR AS A WHOLE WITHOUT THE WRITTEN PERMISSION OF INDUSTRIAL SPECIALTIES MFG. AND IS MED SPECIALITES IS PROHIBITED.

**Note:**  
Max. Pressure 40 psi  
Temp. Range 32°F to 130°F

UNLESS OTHERWISE SPECIFIED:

DIMENSIONS ARE IN INCHES  
TOLERANCES:  
FRACTIONAL ±  
ANGULAR: MACH ± BEND ±  
TWO PLACE DECIMAL ±  
THREE PLACE DECIMAL ±

MATERIAL  
Clear Polycarbonate  
FINISH

DO NOT SCALE DRAWING

NAME	DATE
DRAWN ME	10/7/2013
CHECKED	
ENG APPR.	
MFG APPR.	
Q.A.	

Comments:  
250 micron Element,  
Green Nylon Frame,  
Nylon Screen, Buna-N Seal  
Replacement Element #36861



**Industrial Specialties Mfg.**  
**IS Med Specialties**

DESCRIPTION:  
1/8" Hose Barb Serviceable Filter

SIZE	PART#	REV
A	ILCF-18-250	1
SCALE: 1:1		SHEET 1 OF 1