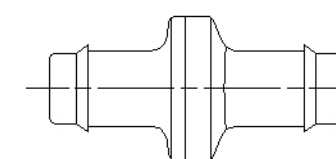


NOTE:

ALL 'TEXT', 'ARROWS & LOGO TO BE
2 HIGH MIN. X 0.25/0.12 RAISED



ACTUAL SIZE

CHECK VALVE TEST PARAMETERS:

CHECK FUNCTION: WITH 3 PSI GAUGE APPLIED TO ENGINE PORT, VALVE
MUST CHECK AND NOT LEAK MORE THAN 10 CCM THROUGH THE INLET PORT.

EXTERNAL LEAKAGE: WITH 3 PSI GAUGE APPLIED TO THE ENGINE PORT, THE
WELD JOINT MUST NOT LEAK MORE THAN 10 CCM.

PERFORMANCE REQUIREMENTS:

OPENING CHARACTERISTICS: SOURCE VACUUM REQUIRED TO OPEN THE VALVE
MUST NOT EXCEED 1 INCH OF WATER.

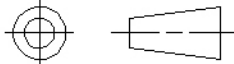
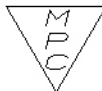
- (A1) OPERATING TEMPERATURE RANGE: -30°F - 250°F
- (C1) WELD JOINT MUST WITHSTAND 20 lbs PERPENDICULAR LOAD
WITHOUT SEPARATION OR LEAKAGE PER MPC PROCEDURE TM-Q-013
- (C2) FLOW RATE TO BE 28 LPM MIN AT 127mm H2O PRESSURE. (D1)

THE DATA, DRAWINGS, AND INFORMATION CONTAINED
ON THIS DOCUMENT IS CONFIDENTIAL AND THE
SOLE PROPERTY OF M.P.C. INC. AND MAY NOT BE
REPRODUCED, USED, OR DISCLOSED WITHOUT PRIOR
WRITTEN PERMISSION OF AN OFFICER OF M.P.C. INC.

COMPUTER GRAPHICS
CHANGE RESTRICTED
NO MANUAL CHANGES

METRIC
LINEAR
DIMENSIONS ARE
MM
UNLESS NOTED

CATIA
DRAWING

ORIGINAL WHEN RED		(A-1)	ADDED OPERATING TEMP. NOTE	970611	SJA	MBL	
		SYM.	REVISION	DATE	DR	CHK'D	
THIS DRAWING CONFORMS TO ANSI Y14.5M-1982		DO NOT SCALE		NUMBER OF DECIMAL PLACES DOES NOT IMPLY A TOLERANCE			
 THIRD ANGLE PROJECTION		SCALE 4X		MATERIAL			
UNLESS OTHERWISE SPECIFIED		DATE 931214		(B1) HOUSING: POLYPROPYLENE 20% TALC FILLED COLOR: BLACK REF. CS 810 DIAPHRAGM: FLUOROSILICONE			
		DRAWN BY JMU					
		CHECKED BY DME					
		D ENG. JCZ					
		O. C.					
ALL LINEAR DIM. ± 0.5		MAN. ENG		 MINIATURE PRECISION COMPONENTS INC. DRAWER L WALWORTH, WI. 53184			
ALL ANGULAR DIM. ±							
ALL FILLET RADII							
ALL CORNER RADII							
MAX. DRAFT							
MAX. COMBINED PARTING LINE FLASH AND MISMATCH TO BE		CUSTOMER NO.		DATE		REV.	
SURFACE FINISH EXTERIOR INTERIOR		TITLE				REV. LEVEL	
CATIA DRAWING		VALVE - 3/8" VACUUM CHECK				D	
						PART NUMBER A748	

PLOT DATE: JANUARY 13, 2006
07:10