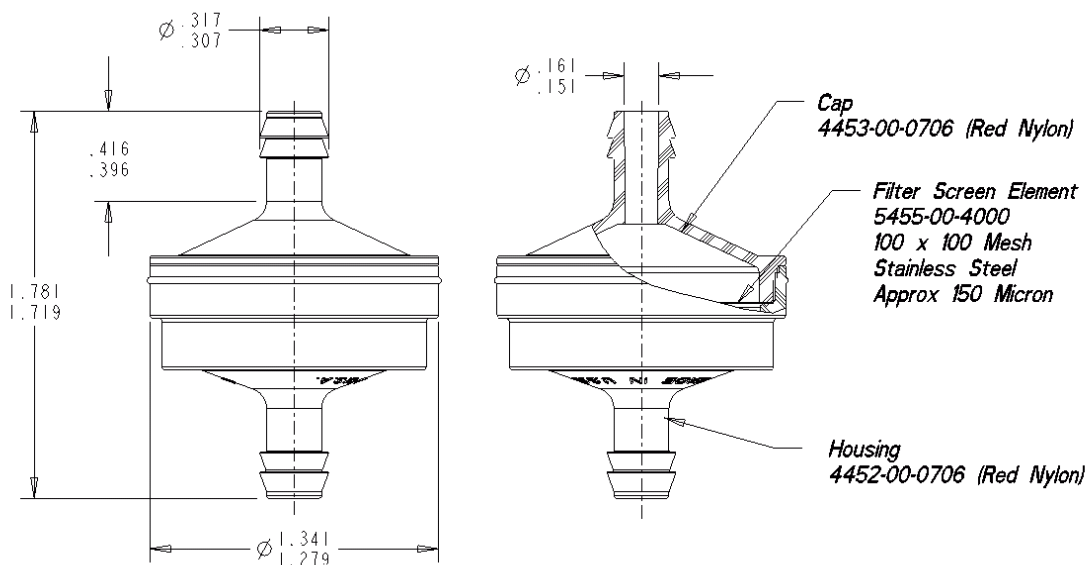


# Visu Filter

Precision In-Line Fuel Filters

## Part No. 8408-XX-9909 (FF300R) Technical Specification



Performance Properties	Typical Value
Hose Barb Size	5/16"
Fuel Line Recommendation	1/4"
Flow Rate (gal/hr) w/ 3 1/2" Fluid Head	8.7
Average Micron Rating	150
Component Materials	Housing: Red Nylon (E-85 compatible) Filter Media: 304 Stainless Steel Mesh Cap: Red Nylon (E-85 compatible)